

Meet our Learning Heroes; they will help us become successful learners.

### Sensible squirrel

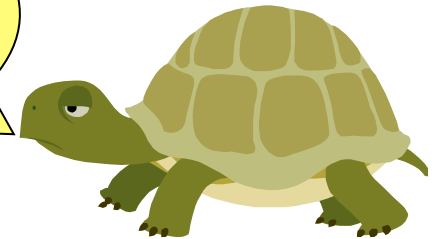


**Good Day! I am Sensible Squirrel.**  
I am very resourceful. I try to find things out for myself and make good use of resources around me to support my learning.  
I make connections with prior learning and this helps me learn new things. I have a step by step approach to my learning.

**BEING READY, WILLING AND ABLE TO LEARN IN DIFFERENT WAYS**

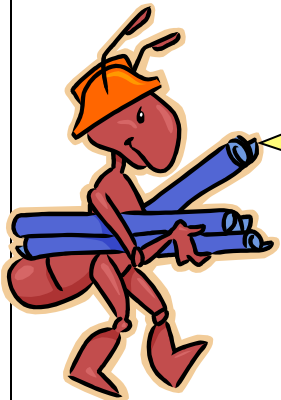
### Tough Tortoise

**Hello, I am Tough Tortoise.**  
I don't give up and I like to be challenged!



**BEING READY, WILLING AND ABLE TO LOCK ONTO LEARNING**

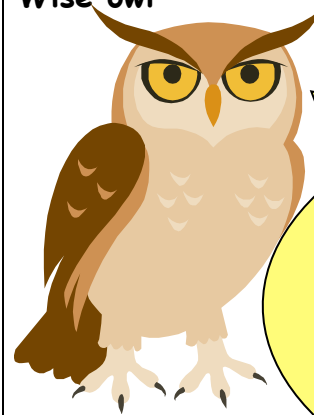
### Team ant



**Hello all!**  
**I belong to Team Ant.**  
I can work independently and I am also a good team player.  
I can put myself in someone else's shoes and show empathy.  
I like to congratulate others on their ideas and I am a good listener.

**BEING READY, WILLING AND ABLE TO LEARN ALONE AND WITH OTHERS**

### Wise owl



**Good Day to you my friends.**  
**I am Wise Owl.**  
I am reflective and I think carefully about how to overcome obstacles in my learning.  
I plan my learning effectively. I like using my everyday experiences to support my learning. I can review and redraft to improve my learning and enjoy talking about the progress I am making.

**BEING READY, WILLING AND ABLE TO BECOME MORE THOUGHTFUL ABOUT LEARNING**

## **Meet our new Learning Heroes - *Building our Learning Power.***

At Beeston Primary School we place learning at the heart of all that we do. We are starting to encourage the children to talk about their learning more effectively. We intend to achieve this through our Building Learning Power Project.

### *What is Building Learning Power?*

We can continually develop our capacity to learn in new and challenging circumstances throughout our life. In the developing field of learning to learn, research suggests that there are several broad dispositions that we need to develop in order to become successful learners.

Professor Guy Claxton suggests that there are four key learning dispositions:

- Resilience
- Reflectiveness
- Resourcefulness
- Reciprocity/social relationships

We have adapted these to use them in our learning every day at Beeston.

We have introduced these dispositions to the children as four animal characters. Each character has different learning behaviours that the children can talk about and try to develop in themselves. At each celebration assembly the children will be awarded certificates for showing one or more of these four Learning powers, they will help us become successful learners. Please see the next page for details of the four animal characters.